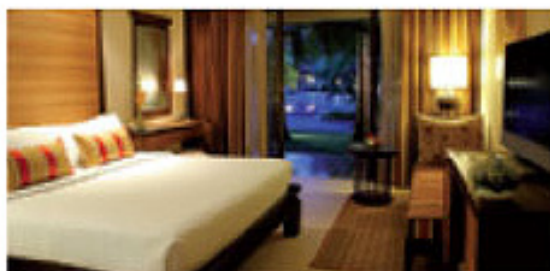


Superior Class



SIAM BAYSHORE RESORT (S)

270 rooms. Located at the end of Pattaya Bay, with easy access to places of interest, the resort is ideal for a beach holiday or stopover break. Low-rise buildings set in tropical gardens with a freeform pool offer an oasis of tranquility.



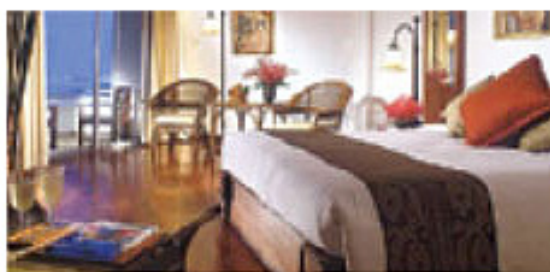
AISAWAN RESORT & SPA (S)

374 rooms. Newly renovated and upgraded the resort is just a five-minute drive from central Pattaya, and features comfortable accommodation with lush gardens, good facilities including a spa and a private beach.



SIAM BAYVIEW HOTEL (S)

260 rooms. In the heart of Pattaya's shopping and entertainment, on the beachside promenade overlooking the Bay. The property has a fresh, contemporary look, built around a free-flowing open-air lobby, and a laid-back atmosphere.



PATTAYA MARRIOTT RESORT & SPA (S)

295 rooms. Situated across the road from Central Pattaya Beach and set in tropical gardens, these well-appointed rooms and extensive facilities, including a spa, are adjacent to shopping, dining and entertainment areas.

First Class



CHOLCHAN PATTAYA RESORT (F)

573 rooms. Located just 5 kms from the centre of town, this comfortable high-rise hotel with a private beach is in north Pattaya. All rooms have recently been upgraded.

Tourist Class



ASIA PATTAYA BEACH (T)

312 rooms. A comfortable hotel just 2 kms from central Pattaya, the hotel is located right by the beach and features a variety of facilities for tennis, golf and all kinds of water sports.